



# NEWSLETTER

## Up and coming dates

**INSET day** - 22nd December - school closed

**8th January** - First day back at school

## Uniform Expectations

Normal school uniform is an essential part of everyday school life. Please remember:

The primary school uniform consists of the following.

- Purple sweatshirt or cardigan, with school logo
- White polo shirt, Grey skirt, trousers or school shorts Grey socks or tights
- Black shoes

Hair accessories should be kept to a minimum and should be small and simple.

No make-up or nail varnish.

No earrings - if ears are pierced

## Children in Need

The children looked brilliant in their Spotty or yellow clothes and accessories for children in need and were very busy at all times of day completing their 'Bearpee's' challenge. With your support we raised

# £36.53 Thank you



## We all Smile in the same Language

As part of the OPA Diploma focus of Being A Good British and International Citizen, we invited all of our community in to share their global cuisine at our 'We all smile in the same language' event. We had a HUGE turnout. A big thanks to all of our families and to Mrs Watt's for her hard work in arranging this event and all the visitors who were guest speakers in school that week.

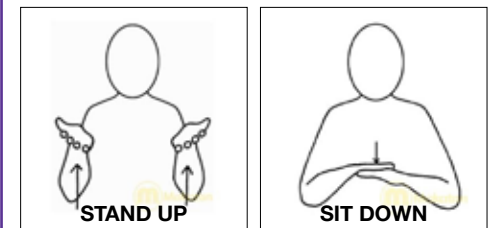
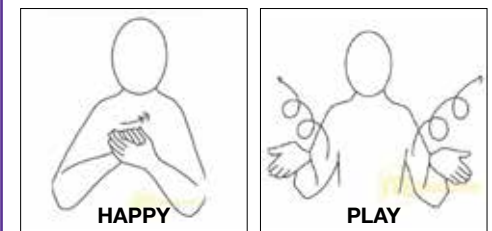


## Makaton

We are an inclusive academy here at OPA Park Hill and we continue to learn Makaton to allow our children and staff to communicate in a non-verbal way where language may be a barrier to communication due to limited English experiences or communication difficulties.

Each week we introduce 2 more signs during our assembly and will share these signs and the video on our twitter.

Have a go at these signs at home with your family.



**Safeguarding Lead: Donna Burnett**



# NEWSLETTER

## Shoe Box appeal

The school parliament have chosen to support St Swithun's Community Shoe Box appeal this year and we are asking for your support with donations of new items. Any donation is greatly appreciated. See further information below. The final date for donations is the **8th December**. Please bring your donations to your child's classroom.



**FESTIVE SHOE BOX APPEAL**

We are appealing to our community to donate presents for children of families who find themselves struggling and in need this Christmas.

If possible, your gifts should contain items from the list below. Please note they should be new and not used.

**TOYS:** cars/truck, board game, craft set, doll, soft toys  
**BATH PRODUCTS:** shower gel, gift set, bath bombs, bubble bath  
**STATIONERY:** pencils, crayons, note book, colouring book, reading book,  
**OTHER:** hat, scarf, gloves, socks, sweet, selection boxes

Age ranges boy/girl aged 0-2, 3-4, 5-8, 9-11

For more information please contact 01924 361212  
[info@eastmoorcommunity.co.uk](mailto:info@eastmoorcommunity.co.uk)

Please drop off your donation by  
**Monday 11th December**

Eastmoor Community Project at  
 St Swithun's Community Centre  
 Arncliffe Road, Eastmoor  
 Wakefield WF1 4RR  
 01924 361212

## Festive activities

We have a busy few weeks ahead in school leading up to our last day of term on the **21st December**. We are looking forward to welcoming you into school to enjoy activities alongside your child. Please see the list of dates attached.



OPAPH competed in the regional Emile spelling competition against 12 other Outwood primaries and came first!! We gave over 800 correct spellings and are now through to the national spelling finals against 32 primaries across the UK. Mahnoor Bi ranked 1st place, Thinula Pathirage ranked 2nd place and Tobore Johnson ranked 4th place in the whole trust during the regional finals.

**All welcome every Thursday morning from 9am - 11am.**




**Our Parent / Carer led peer support group will begin on 7th November 9am - 11am**

**Everyone is invited to access our Free, friendly social group.**

**No need to book, just turn up. The kettle will be warm.**

**Safeguarding Lead: Donna Burnett**

